



Project funded by the
EUROPEAN UNION



A Scientific Network for Earthquake, Landslide and Flood Hazard Prevention

Common borders. Common solutions.

Priority and Measure

Priority 2: Sharing resources and competencies for environmental protection and conservation

Measure 2.1.: Strengthening the joint knowledge and information base needed to address common challenges in the environmental protection of river and maritime systems)

Duration: 24 months

Total Budget: 700 000,00

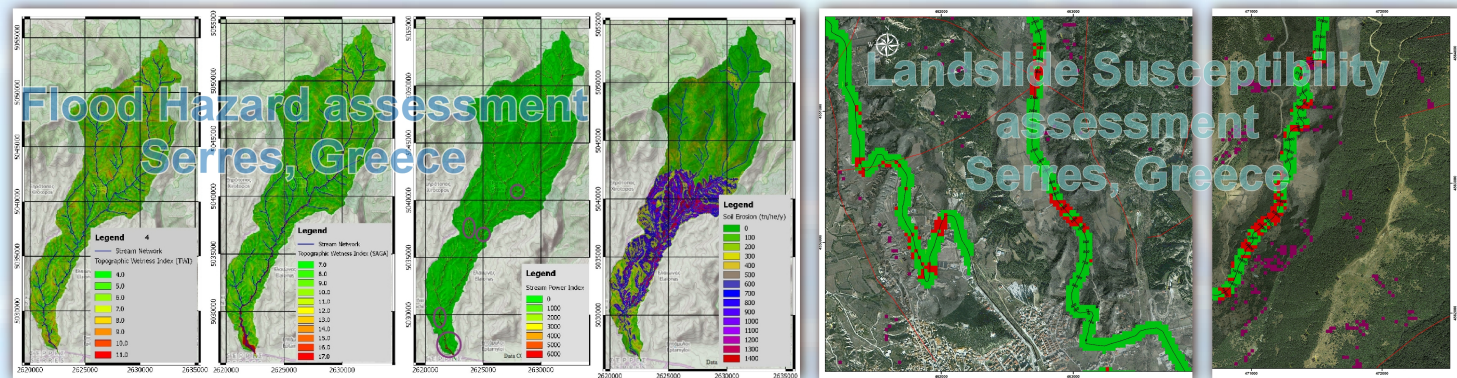
Total Grant: 630 000,00

Start-End Dates: 01/05/2013 - 30/04/2015



About the Project / Overall objectives:

The Project is relevant to EU Strategies regarding Natural Disaster Mitigation and aims for a common approach in the region to support State and Local Administration actions towards Earthquake, Landslide and Flood Hazard Prevention. Scope of the Project is to establish a strong regional cooperation by developing a SCientific NETwork, sharing competencies and resources to address Earthquake, Landslide and Flood (ELF) Hazards which have Trans - boundary consequences both on the economy and on the environment.



The **Expected Results/Outputs** will form the basis for future common regional strategies on ELF hazard prevention, through harmonization according to EU Regulations in relation to respective legal frameworks, data and Meta-data availability and the harmonization of methodologies used to assess ELF hazards.

The entire implementation is based on Open Source GIS platforms which combined with Open Seminars held at the last semester of the project implementation period, will ensure transparent cooperation between stakeholders/ final beneficiaries including the scientific community, the local and state administration and the public, both in EU member states and in the riparian countries of the region.



Best Practices are attributed i) to the specific type of the project: joint design, joint implementation and coordination through a Project Steering Committee (PSC); ii) to communication mechanisms including the extensive use of Information & Communication Technologies (VOIP communication, Cloud storage etc); iii) the use of Open Source Software for GIS and WebGIS applications and iv) Visibility actions taken including the Project's Web Page, Twitter, Facebook and YouTube accounts, newspaper inserts, press releases, leaflet and Brochure distribution, and finally, v) Open Seminars to disseminate methodologies, procedures and results.

The Partnership!

Beneficiaries:

ENPI: Technological Educational Institute of Kentriki Makedonia, Serres, Greece.

IPA: Kandilli Observatory & Earthquake Research Institute (KOERI), Bogazici University, Istanbul, Turkey

ENPI Partners:

Partner 1: Democritus University of Thrace, Anatoliki Makedonia & Thraki, Greece.

Partner 2: Earthquake Planning & Protection Organization EPPO/Institute of Engineering Seismology & Earthquake Design- ITSAK, Kentriki Makedonia, Greece

Partner 3: "Prof. Assen Zlatarov" University of Burgas, Yugoiztochen, Bulgaria

Partner 4: Ovidius University of Constanta, Sud-Est, Romania

Partner 5: "Dr. Ghitu" Institute of Electronic Engineering & Nanotechnologies, Academy of Sciences, Chisinau, Moldova

Partner 6: Environmental Academy of Sciences, Black Sea Branch, Odessa, Ukraine

Contact Person: Dr. Konstantinos PAPATHEODOROU, Project Coordinator, TEI of Kentriki Makedonia, tel. +3023210 49400, conpapa@teiser.gr, conpapa.2012@gmail.com

CROSS BORDER
COOPERATION